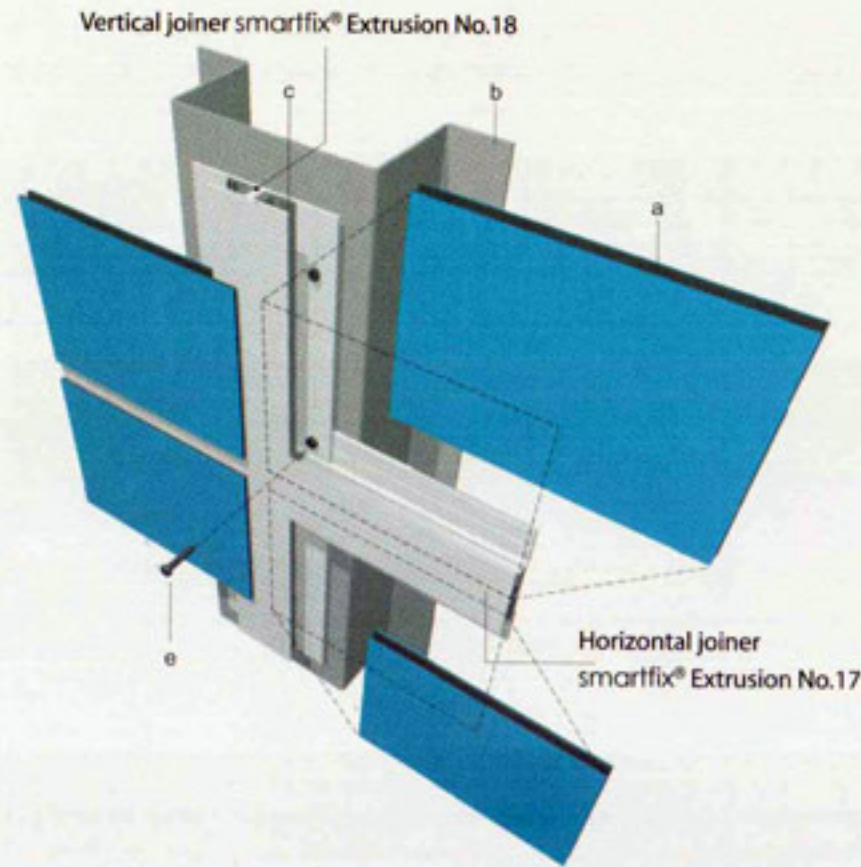


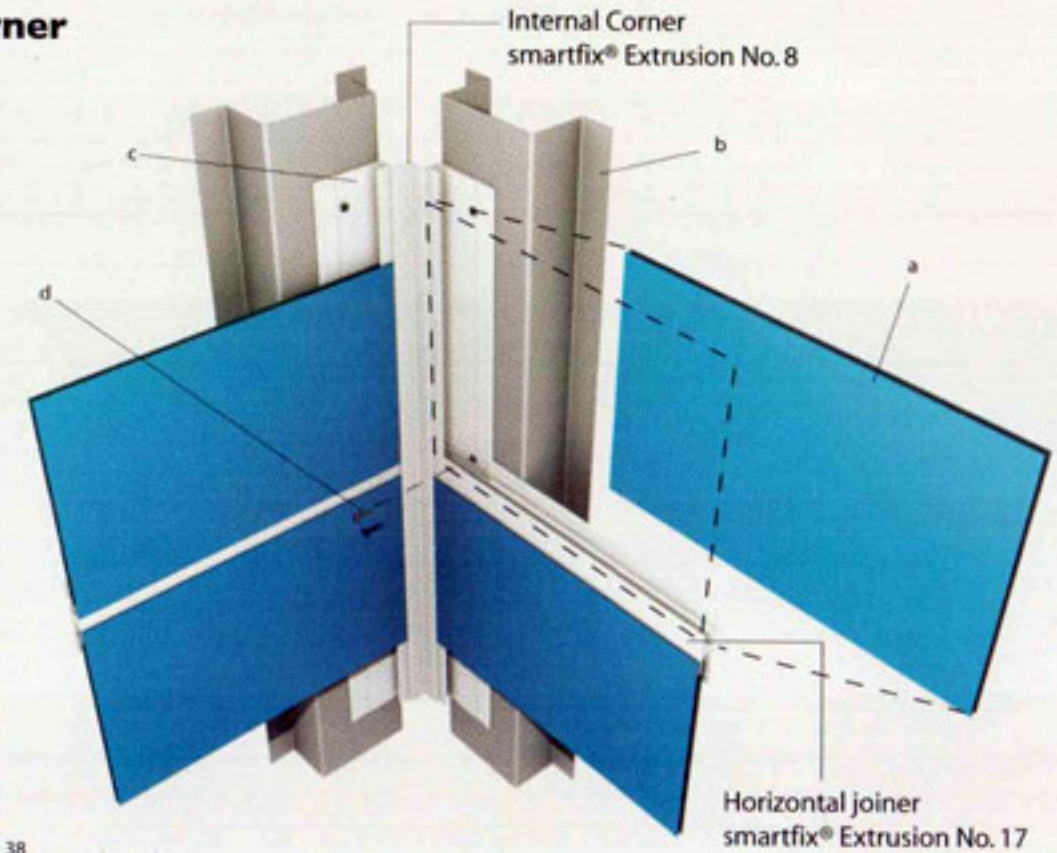
# Typical Details

# CTi Ceramic Composite Panel

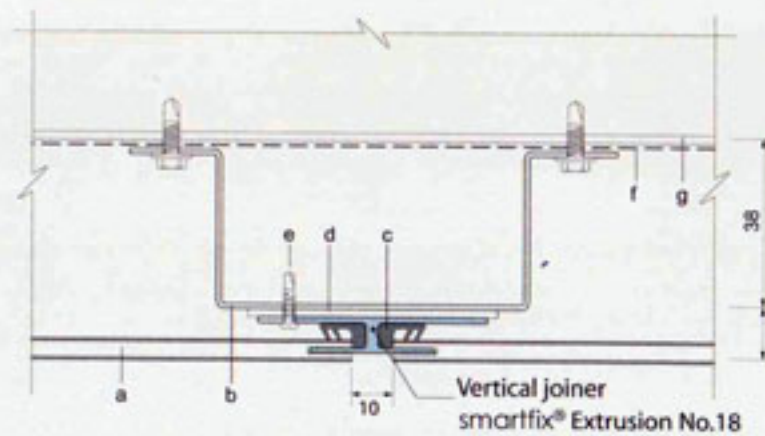
**smartfix®**  
• External Cladding



## • Inner Corner

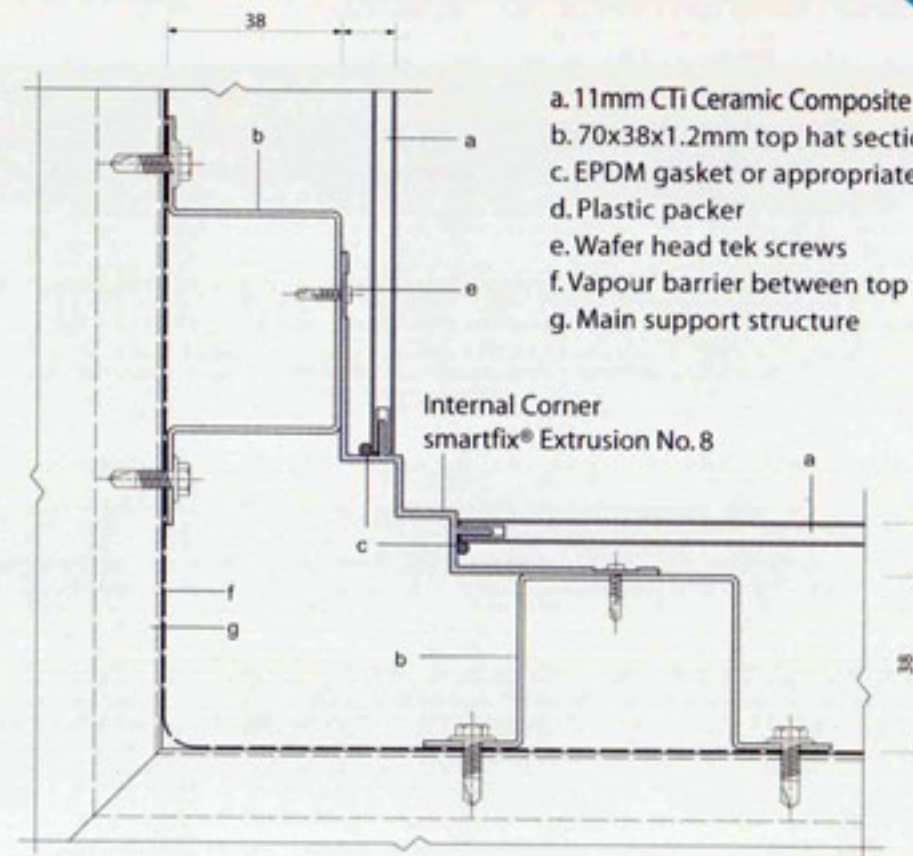


Horizontal joiner  
smartfix®  
Extrusion No.17



Vertical joiner  
smartfix® Extrusion No.18

- a. 11mm CTi Ceramic Composite Panel
- b. 70x38x1.2mm top hat section or structure as required
- c. EPDM gasket for weather seal & sound dampening control
- d. Plastic packer
- e. Wafer head tek screws
- f. Vapour barrier between top hat and support structure
- g. Main support structure

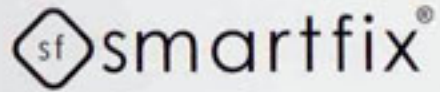


- a. 11mm CTi Ceramic Composite Panel
- b. 70x38x1.2mm top hat section or structure as required
- c. EPDM gasket or appropriate sealant for concealed weather seal
- d. Plastic packer
- e. Wafer head tek screws
- f. Vapour barrier between top hat and support structure
- g. Main support structure

Internal Corner  
smartfix® Extrusion No. 8

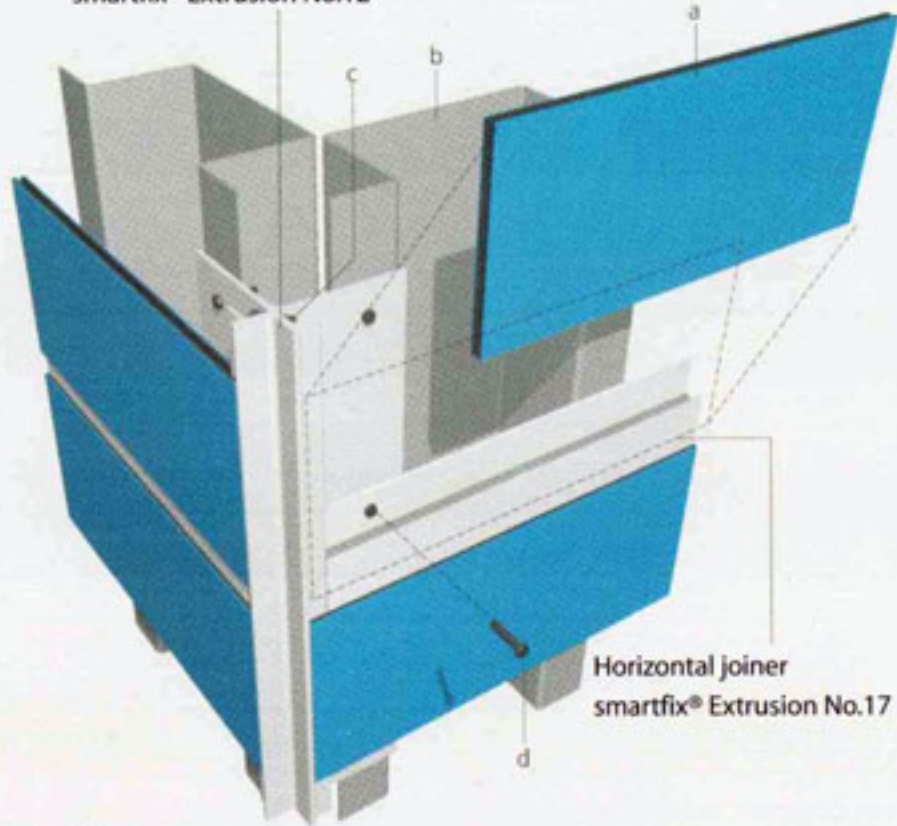
# Typical Details

# CTi Ceramic Composite Panel



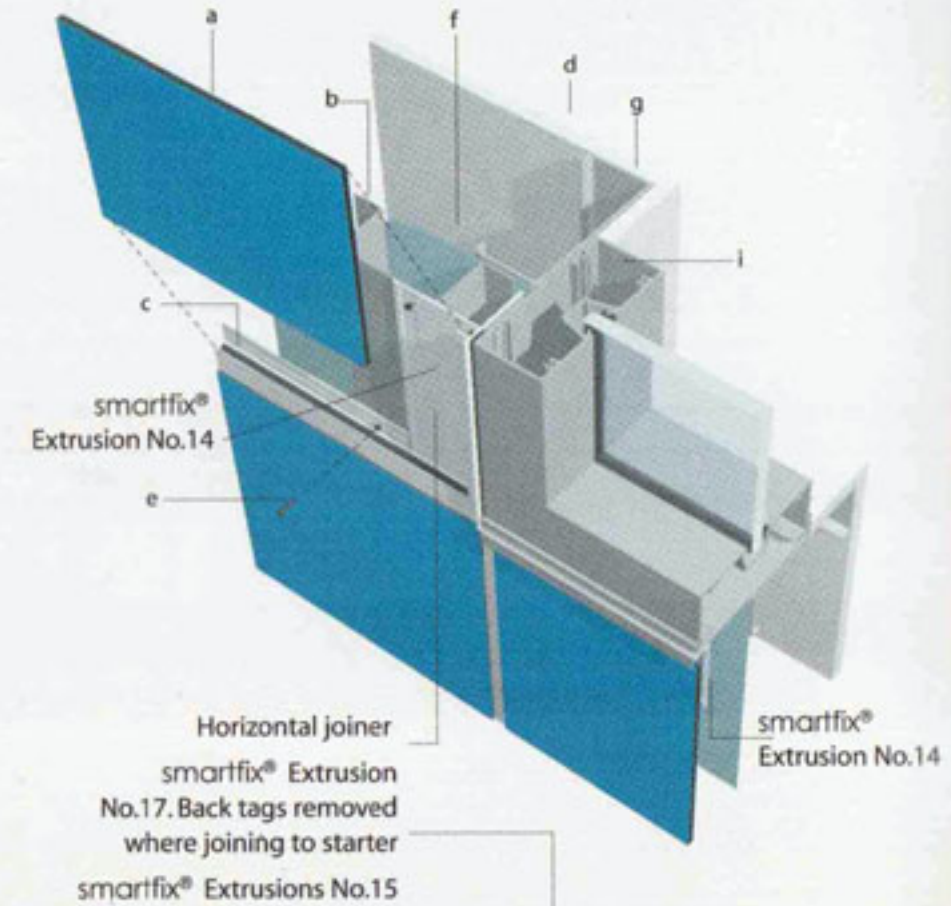
## • Outer Corner

Negative corner  
smartfix® Extrusion No.12



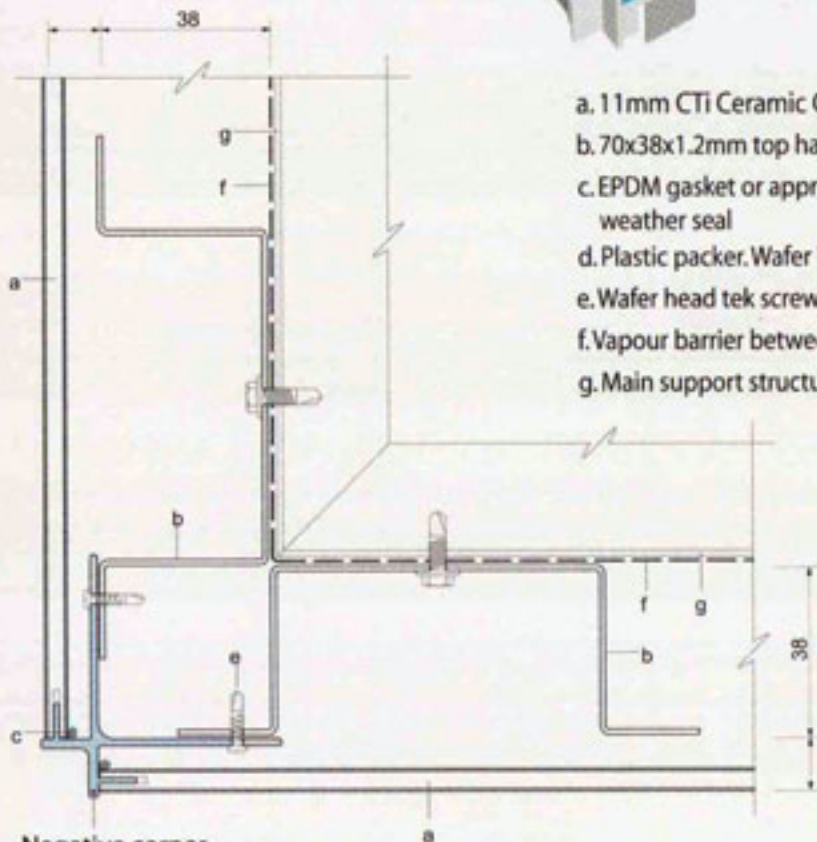
Horizontal joiner  
smartfix® Extrusion No.17

## • Window Jamb



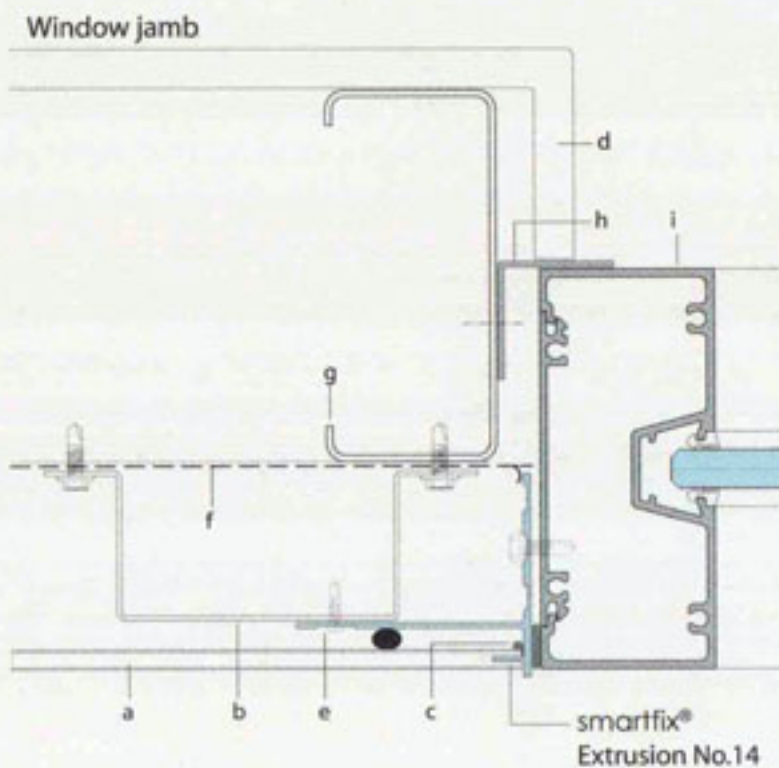
Horizontal joiner  
smartfix® Extrusion  
No.17. Back tags removed  
where joining to starter  
smartfix® Extrusions No.15

smartfix®  
Extrusion No.14

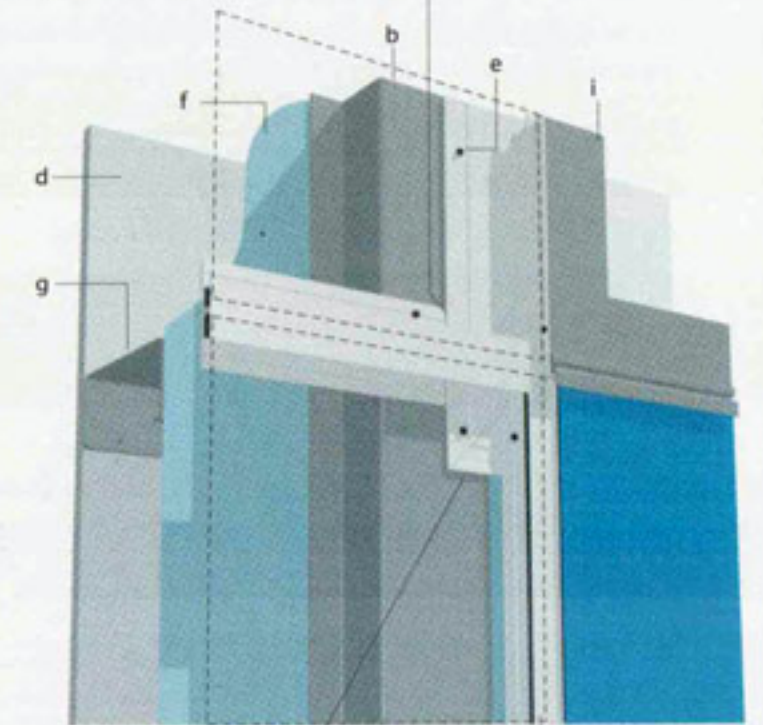


- a. 11mm CTi Ceramic Composite Panel
- b. 70x38x1.2mm top hat section or structure as required
- c. EPDM gasket or appropriate sealant for concealed weather seal
- d. Plastic packer. Wafer head tek screws
- e. Wafer head tek screws
- f. Vapour barrier between top hat and support structure
- g. Main support structure

Negative corner  
smartfix® Extrusion No.12



smartfix®  
Extrusion No.14



smartfix® Starter  
Extrusion No.15 mitered  
around window frames

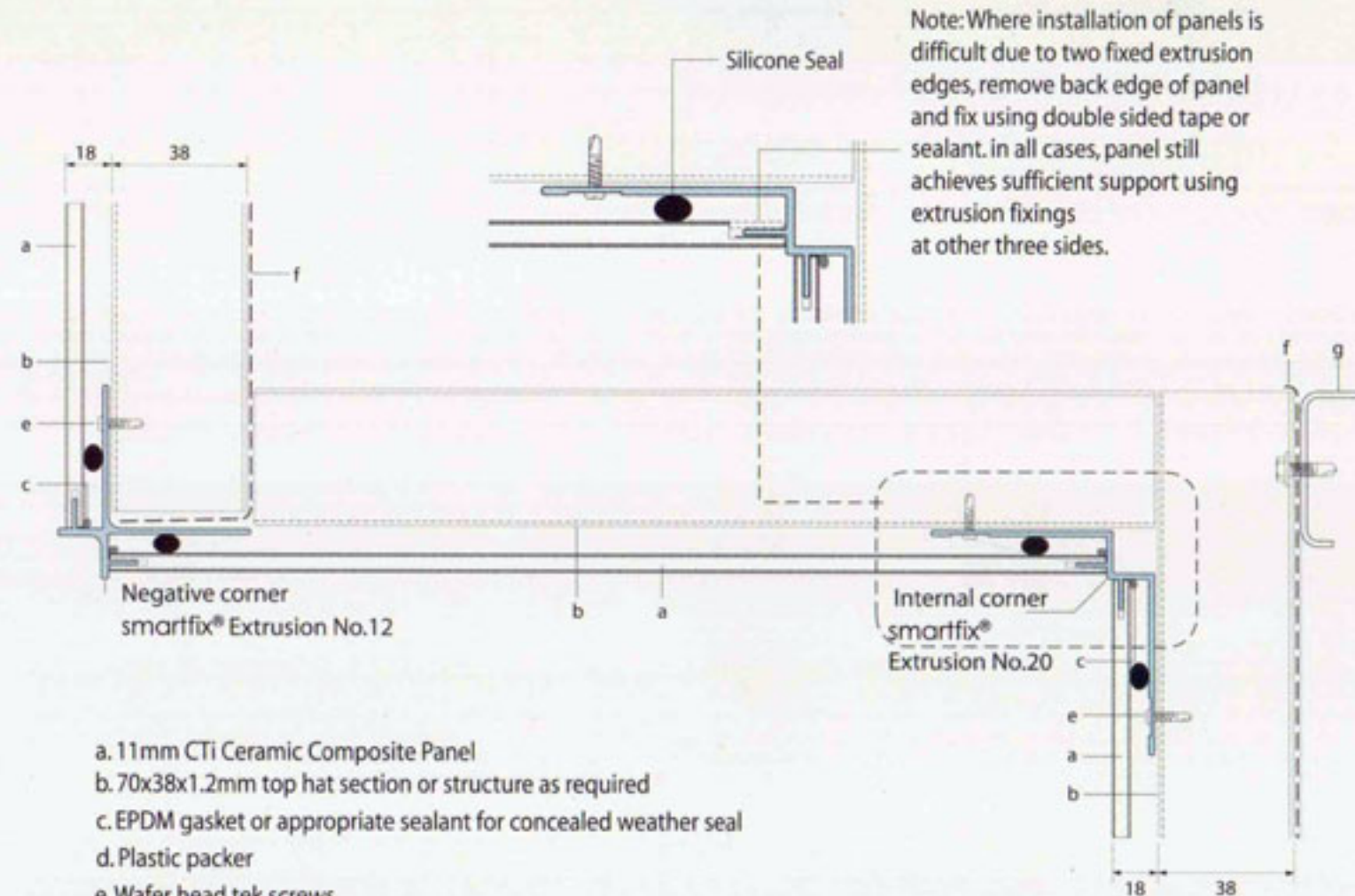
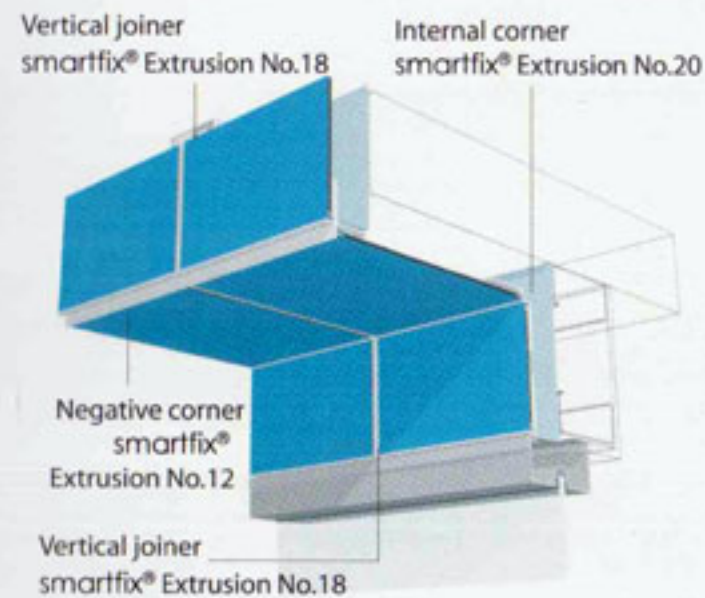
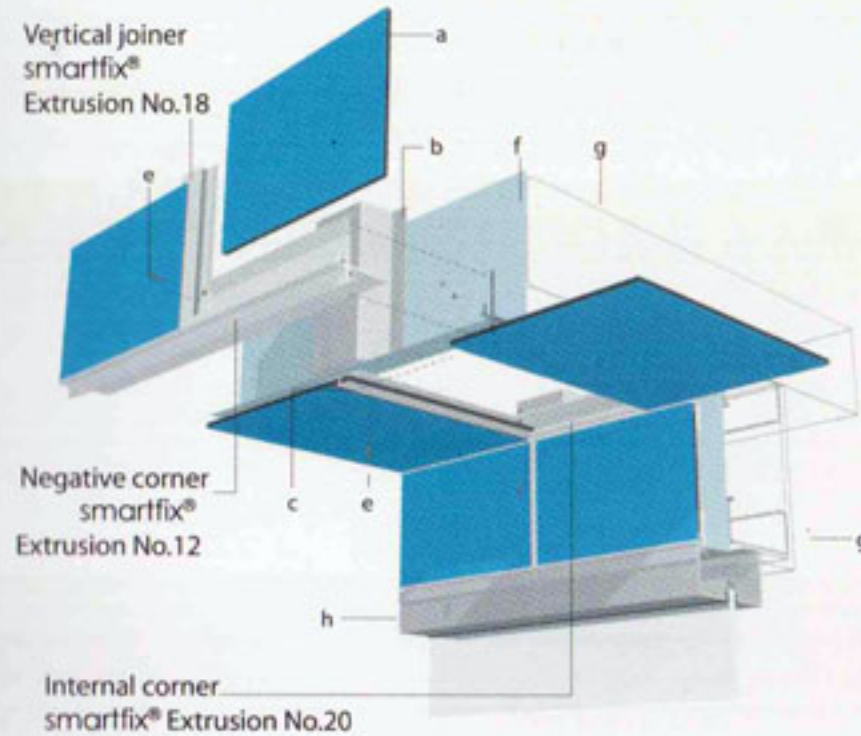
Vertical joiner smartfix® Extrusion No.18  
fixed over smartfix® Starter  
Extrusions No.14

# Typical Details

# CTi Ceramic Composite Panel

**smartfix®**  
• Soffit Details

For more **smartfix®** details, please log on to [www.smartfix.com.au](http://www.smartfix.com.au)



Note: Where installation of panels is difficult due to two fixed extrusion edges, remove back edge of panel and fix using double sided tape or sealant. In all cases, panel still achieves sufficient support using extrusion fixings at other three sides.

- a. 11mm CTi Ceramic Composite Panel
- b. 70x38x1.2mm top hat section or structure as required
- c. EPDM gasket or appropriate sealant for concealed weather seal
- d. Plastic packer
- e. Wafer head tek screws
- f. Vapour barrier between top hat and support structure
- g. Main support structure
- h. Glazing frame. Refer to page 9 & 10 for Window Details